



EMAUS CENTRE
Gdańsk, Kartuska

Semester number: 5	Architectural Project EMAUS Centre	Number of ECTS: 6
Studies: I		Academic year: 2025/2026

**Department offering the
course:**
**Department of Urban
Architecture and Waterfront
Spaces**

Tutor:
Ph.D. Eng. Arch. Magdalena
Podwojewska

Course Overview:
Urban space encompasses places of residence, but also places of work and social interaction. The city is a space for exchanging knowledge, services, and establishing contacts in the spirit of responsibility for ensuring social equality. The project aims to create attractive facilities where users will find space for creative work, recreation, social integration, purchasing local crafts, and so on, with special consideration for people with special needs.

Pre-design work will include analysis of the existing context, identifying problems and potential, and incorporating them into the architectural design. The design theme is a concept for a facility with a chosen function for location in Gdańsk:

EMAUS district centre
Gdańsk Siedlce
Kartuska 195 A, Gdańsk

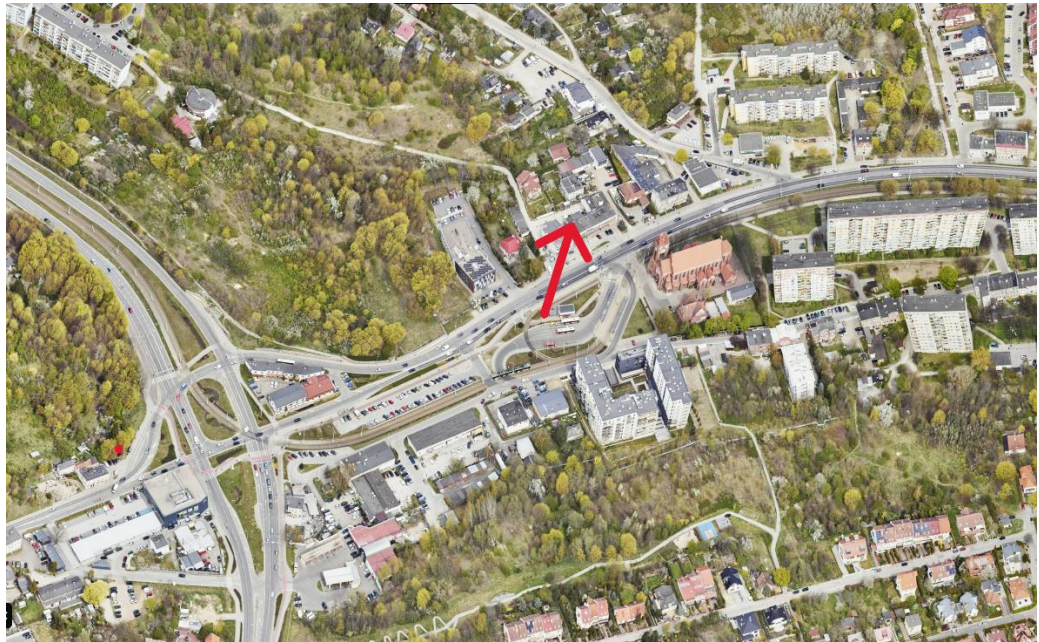
Shopping and service center with restaurants, craft workshops, and social functions that integrate residents. The proposed facility is designed to be accessible to people with disabilities and in accordance with the principles of design for all – universal design;

Course objectives:

- developing aesthetic sensitivity and creativity in shaping contemporary architectural form;
- developing the concept of functionality and accessibility of the built environment for all users;
- familiarizing students with concepts such as accessible architecture, universal design, people with disabilities, and the principles of universal design;
- familiarizing students with applicable legal regulations related to the design task being implemented;
- developing skills in project presentation, argumentation, and defense of one's own concept.

Class Schedule:

A detailed class schedule will be presented at the first class on October 2, 2025.



location of the project plot

Gdańsk Siedlce

Kartuska 195 A, Gdańsk