

UNIVERSIDAD LOYOLA ANDALUCÍA

Contents

Introduction	3
Our strategic drivers	4
Internationalization	5
Our Campuses	7
Extra curricular activities	9
A quality university	10
Universidad Loyola today	13
Employability	16
Production of scientific research & knowledge	17
Educational offering	18
Educational offering development	19
Estimated growth per campus	23

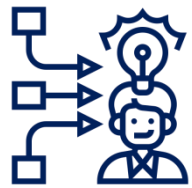
Introduction

- Universidad Loyola is:
 - A university part of the Society of Jesus.
 - A university with over 4.900 students (Academic Year 20/21).
 - Part of a network comprising over 193 higher education centers around the world.
 - A young university, with only 10 years since its creation.
 - Campuses in Córdoba, Sevilla, y Granada (and potential plans for Málaga).
 - One of the three Spanish private universities compliant with the new University Degree (“Castells Degree”).

Universidad Loyola is a steadily growing institution.



Our strategic drivers



TEACHING INNOVATION



FACULTY



EXTRACURRICULAR ACTIVITIES



INTERNATIONALIZATION



EMPLOYABILITY



INTERNSHIPS



Internationalization

Jesuit identity

Universidad Loyola is part of IAJU (International Association of Jesuit Universities), an international network comprising over 190 prestigious higher education institutions across the world with a strong track record supported by their social dimension.



UNIVERSITY OF
SAN FRANCISCO
CHANGE THE WORLD FROM HERE



Fairfield
UNIVERSITY



GEORGETOWN UNIVERSITY

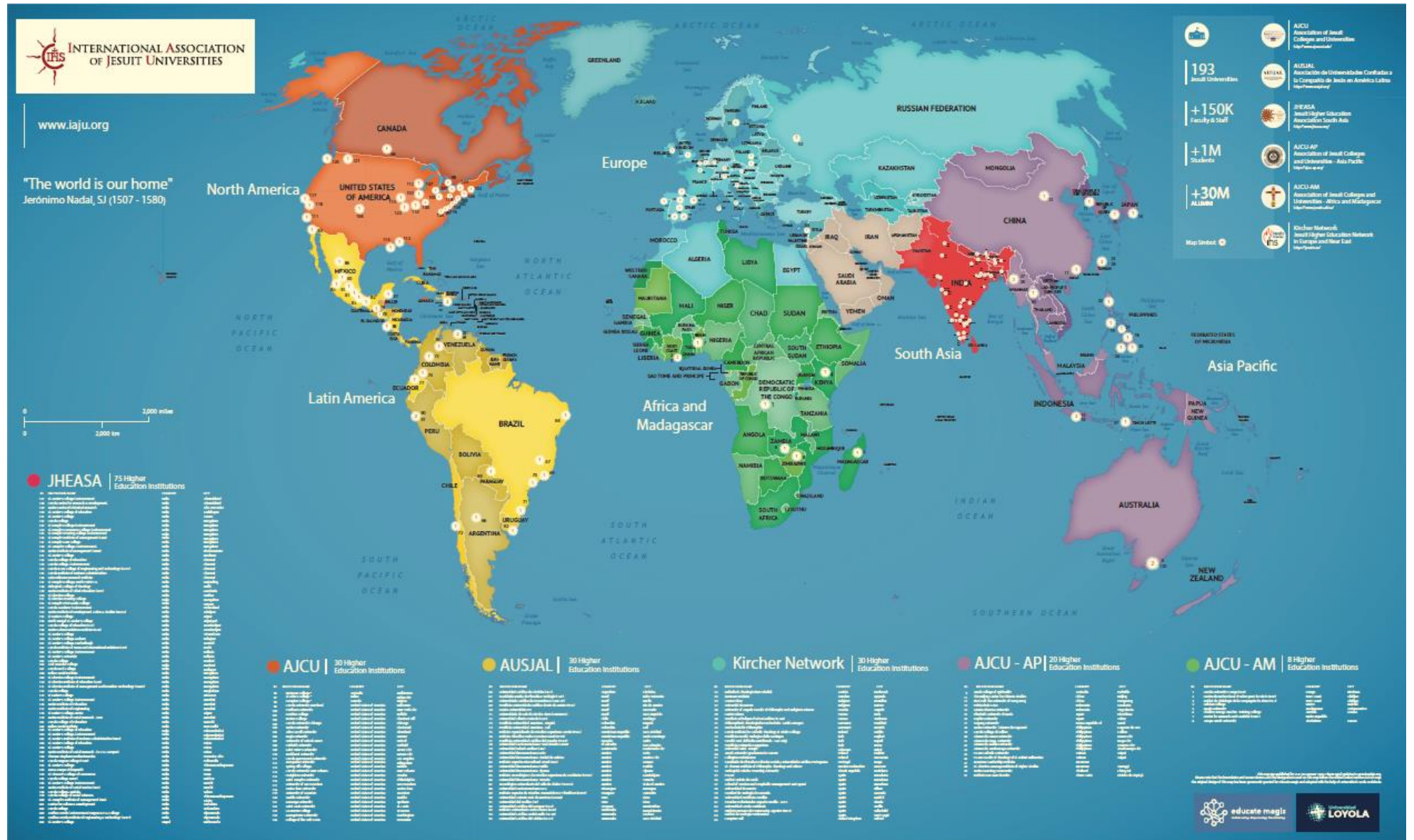


St. Xavier's College,
Mumbai



UNIVERSIDAD CENTROAMERICANA
"JOSE SIMEÓN CAÑAS"

Internationalization



Our Campuses



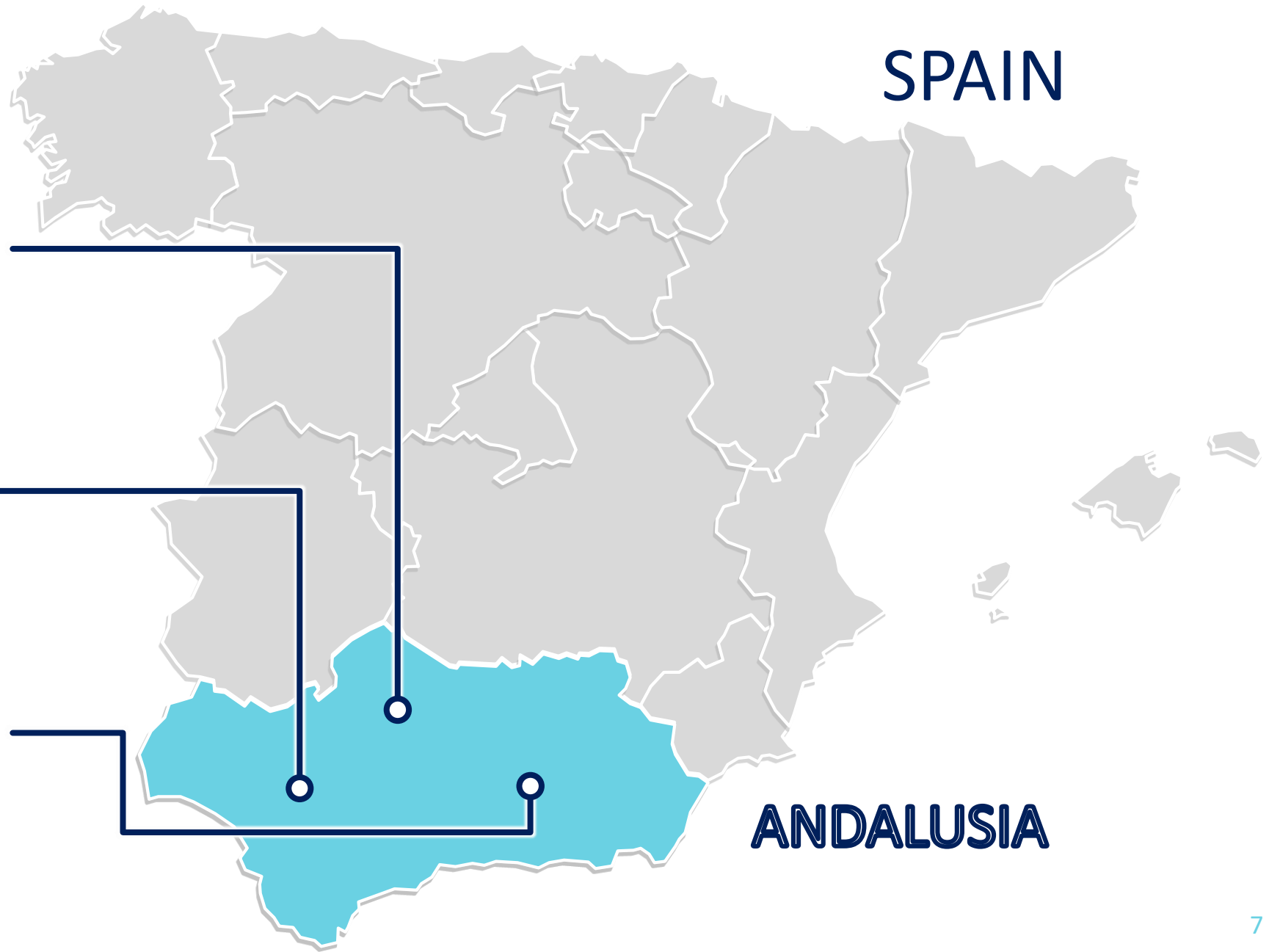
CÓRDOBA



SEVILLA



GRANADA



SPAIN

ANDALUSIA

Our Campuses

Discover our Campuses!



Extra curricular Activities



SPORTS



DEBATE CLUB



RADIO & TV STUDIOS



VOLUNTEERING



THEATER GROUP



CULTURAL ACTIVITIES

A quality university

POSITIONING IN TERMS OF QUALITY

Quality positioning vs Private & Andalusian Universities

- Private Universities
- Andalusian Universities
- Universidad Loyola Andalucía



Research

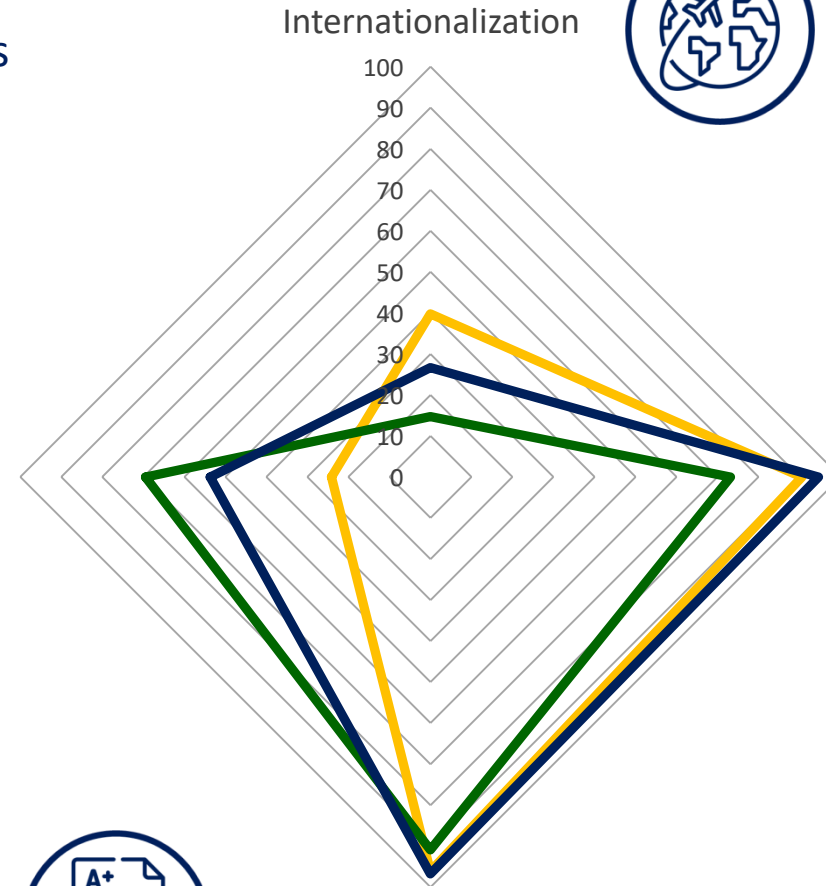


Internationalization

Employability



Academic Performance



Source: Generated from public data FCYD Report 2019

A University in need of growing...

University	Quality Rating	University	Size
LOYOLA	77,17	Sevilla	60.293
Granada	74,04	Granada	52.444
Córdoba	72,04	Málaga	36.432
Jaén	71,04	Andalusian U. Avg.	26.861
Almería	70,52	Cádiz	21.865
Pablo de Olavide	68,73	Córdoba	18.078
Andalusian U. Avg.	68,71	Jaén	14.764
Málaga	67,98	Almería	13.795
Sevilla	66,83	Pablo de Olavide	12.587
Huelva	65,68	Huelva	10.863
Cádiz	63,79	LOYOLA	3.594

Universidad Loyola is the top-rated university in Andalusia in terms of quality while being the smallest in size per number of students.

Our strategy demands an increase in size while we maintain and improve our quality rate.



A University in need of growing...

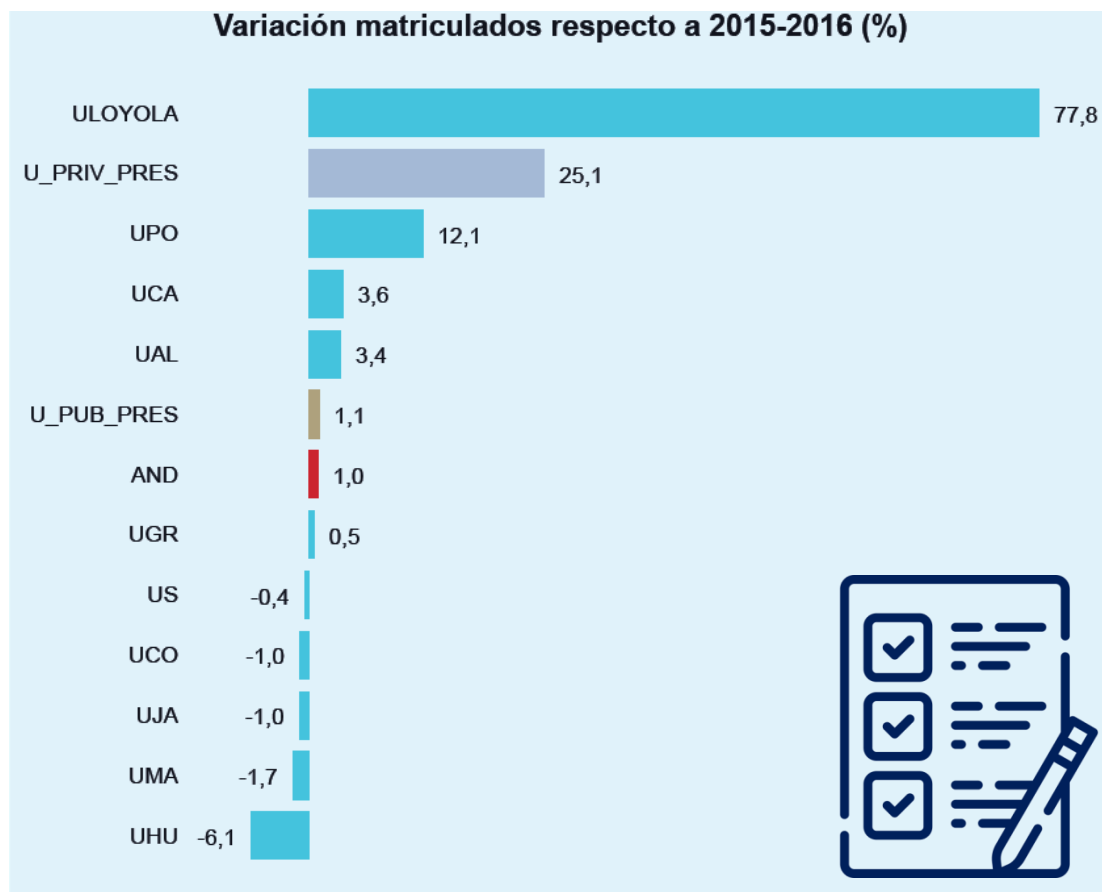
NUMBER OF UNDERGRADUATE/GRADUATE STUDENTS AND PROGRAMS

DEGREE – Loyola vs PUBLIC ANDALOUSIAN Universities			
Year 2019-20	Students	Programs	Student per Program Avg.
Sevilla	52.298	67	780,6
Granada	43.926	64	686,3
Málaga	31.353	59	531,4
Cádiz	18.489	45	410,9
Córdoba	14.394	34	423,4
Jaén	11.998	34	352,9
Almería	11.177	30	372,6
Olavide	10.041	22	456,4
Huelva	9.003	29	310,4
Loyola	3.212	13	247,1
Avg. Andalousian U.	22.520	43	527,8
Loyola/Andalousian U. Avg.	14,3%	30,5%	46,8%

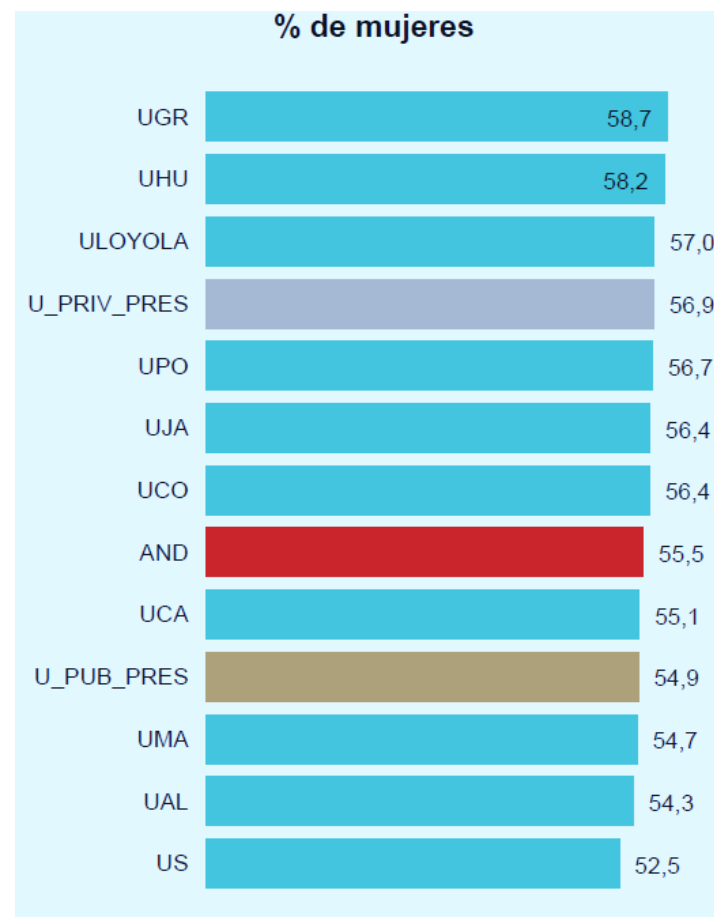
MASTER – Loyola vs PUBLIC ANDALOUSIAN Universities			
Year 2019-20	Students	Programs	Student per Program Avg.
Sevilla	5.846	93	63
Granada	5.033	112	45
Málaga	3.266	64	51
Cádiz	2.351	55	43
Jaén	2.069	44	47
Córdoba	1.965	46	43
Almería	1.678	41	41
Olavide	1.623	40	41
Huelva	1.286	35	37
Loyola	382	9	42
Avg. Andalousian U.	2.791	59	47
Loyola/Andalousian U. Avg.	13,7%	15,3%	89,6%

Universidad Loyola today

Enrollment variation 20/21 vs 2015/16 (%)

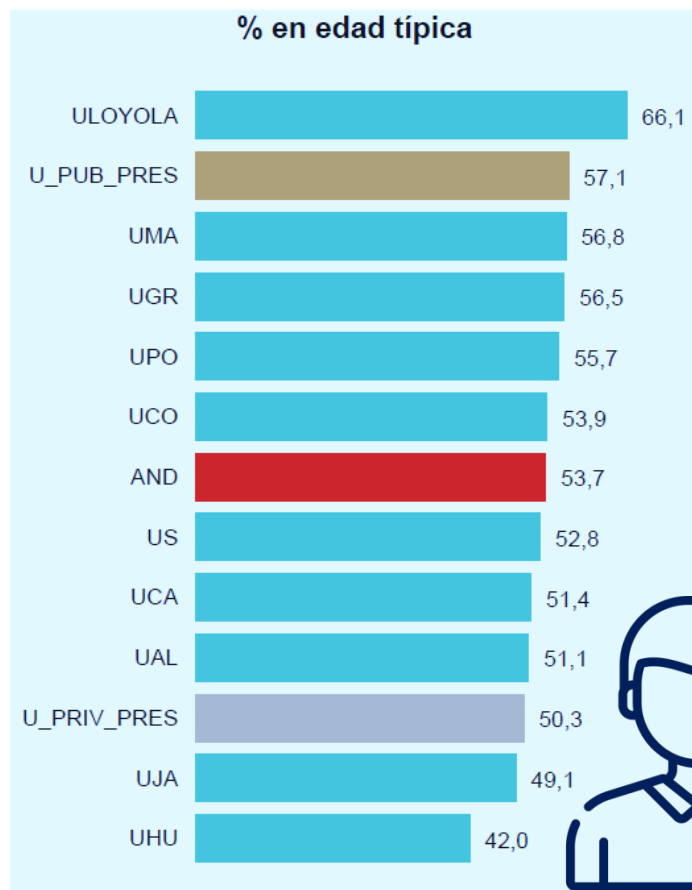


Women enrollment (%)



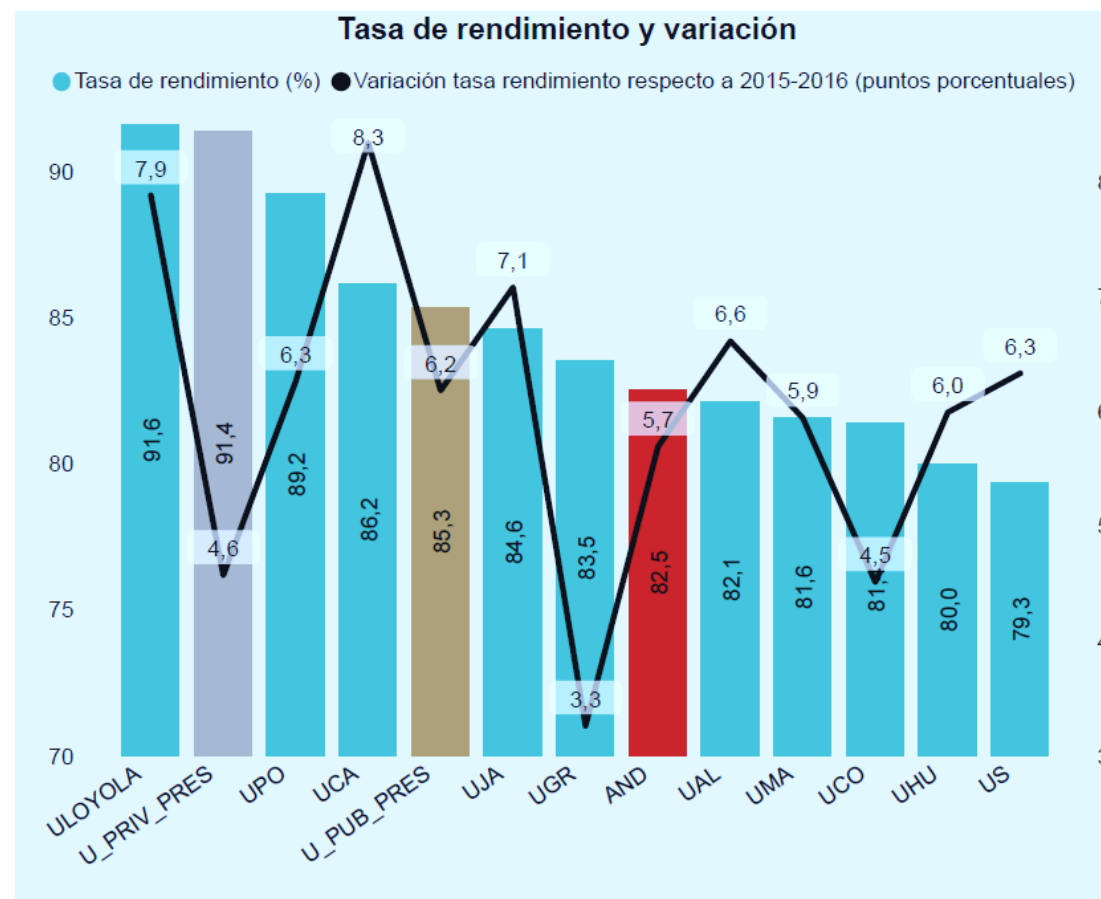
Universidad Loyola today

Typical age enrollment (%)



- Note: Typical age is 18-21 y/o for a Degree, less than 25 y/o for a Master and less than 30 y/o for Doctorate.

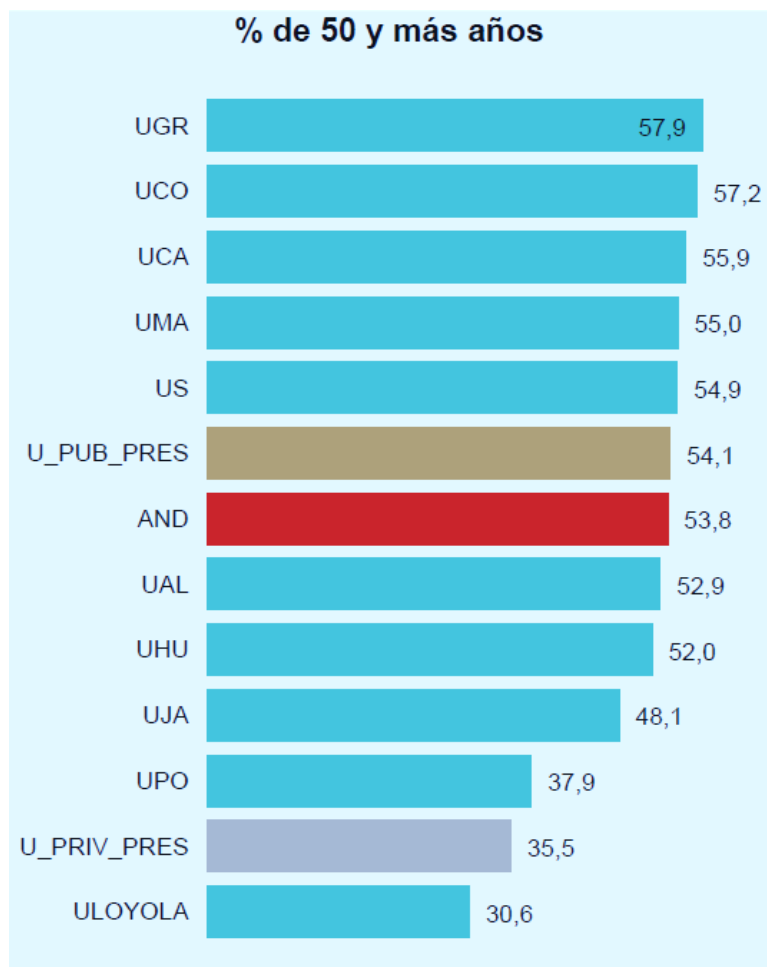
Performance rate. Degree students



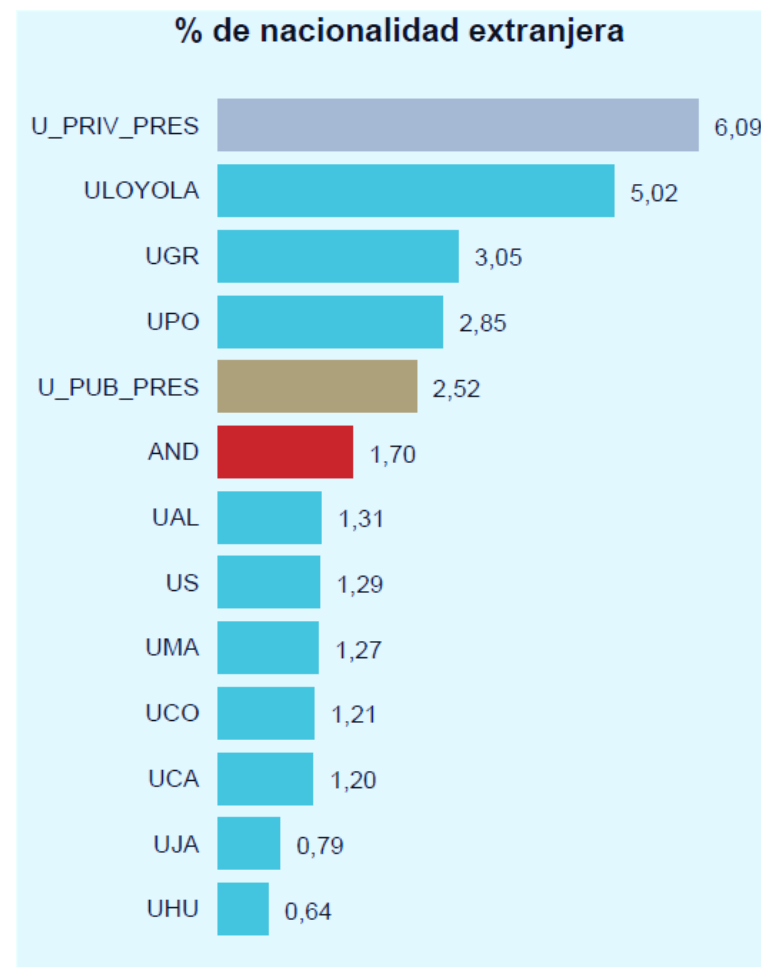
- Note: Ratio, in percentage, between credits passed and those enrolled.

Universidad Loyola today

Staff over 50 years old (%)



Foreign staff (%)



Employability

	DEGREES	MASTERS
Employment rate (%)	78,85	80,36
Employment ranking	13	5
Indefinite Contract (%)	81,08	75
Indefinite Contract ranking	2	4
Full-time contracts (%)	97,3	95,12
Full-time contracts ranking	2	2

Production of scientific research & knowledge 2013-2019 Report

- Web of Science documents (pag. 6)
- Category Normalized Citation Impact (pag. 8)
- Documents according JCR quartil (pag. 9)
- Documents according WOS categories (pag. 20)
- (Almost) 1.000 documents at Scopus in last 5 years → THE ranking

Educational offering

DEGREES



International Relations



Education



Communication

CURRENT PROGRAMS



Business



Economy



Psychology



Engineering



Law



Criminology



Arts



Theology

Educational offering development



DEGREES

Over 12 new programs to start in the next 3 academic years

PROGRAM		STARTING YEAR		
BUSINESS 	Data and Business Analytics, combinable con ADE	22-23		
ENGINEERING 	Ingeniería del Software	22-23		
ARTS & DIGITAL DESIGN 	Artes Escénicas y Cinematográficas	22-23		
	Diseño, Desarrollo de Videojuegos y Animación	22-23		
	Artes Plásticas y Digitales		23-24	
HEALTHCARE 	Biotecnología	22-23		
	Farmacia	22-23		
	Nutrición Humana y Dietética	22-23		
	Ciencias de la Actividad Física y del Deporte	22-23		
	Medicina		23-24	
	Enfermería		23-24	
	Fisioterapia		23-24	

Educational offering development



MASTERS

PROGRAM		STARTING YEAR		
BUSINESS 	Máster in Management: Empresas Agroalimentarias	22-23		
	Máster in Management: Empresas Turísticas	22-23		
	MBA Part Time	22-23		
	MBA + Máster Universitario en Tributación y Asesoría Fiscal		23-24	
LAW 	Máster Universitario en Abogacía + Máster en Transformación Digital	22-23		
	Máster en Transformación Digital (MTD)		23-24	
	Máster en Derecho Internacional de los Negocios (MDIN)		23-24	
	Máster Universitario en Abogacía + MDIN		23-24	
COMMUNICATIONS 	Máster en Dir. Com. Corporativa y Digital (MCCD) + MiM Negocios Digitales		23-24	
	Máster Producción de series de ficción		23-24	
	Máster en Creatividad Publicitaria Digital		23-24	
	Máster Film Scoring			24-25
	Máster Periodismo datos / investigación			24-25

Educational offering development



MASTERS

PROGRAM		STARTING YEAR		
ENGINEERING 	Master en energía y tecnologías del hidrógeno	22-23		
	Master en Ciberseguridad para CISO Loyola- Telefónica Tech	22-23		
	Master en Inteligencia Artificial (MAI)	22-23		
	Master Data Analytics (MDA)	22-23		
	MUIInd + Master Industria avanzada MIA	22-23		
	MUIInd + Master Data Analytics (MDA)	22-23		
	MUIInd + Master Inteligencia Artificial (MAI)	22-23		
	Master sistemas almacenamiento energético (MSAE)		23-24	
	MUIInd + MSAE		23-24	
	Master en Smart Logistics		23-24	
	Master en Blockchain aplicado		23-24	
	Master en Smart Cities			24-25
	Master en Quantum Computing (MQC)			24-25

Educational offering development



MASTERS

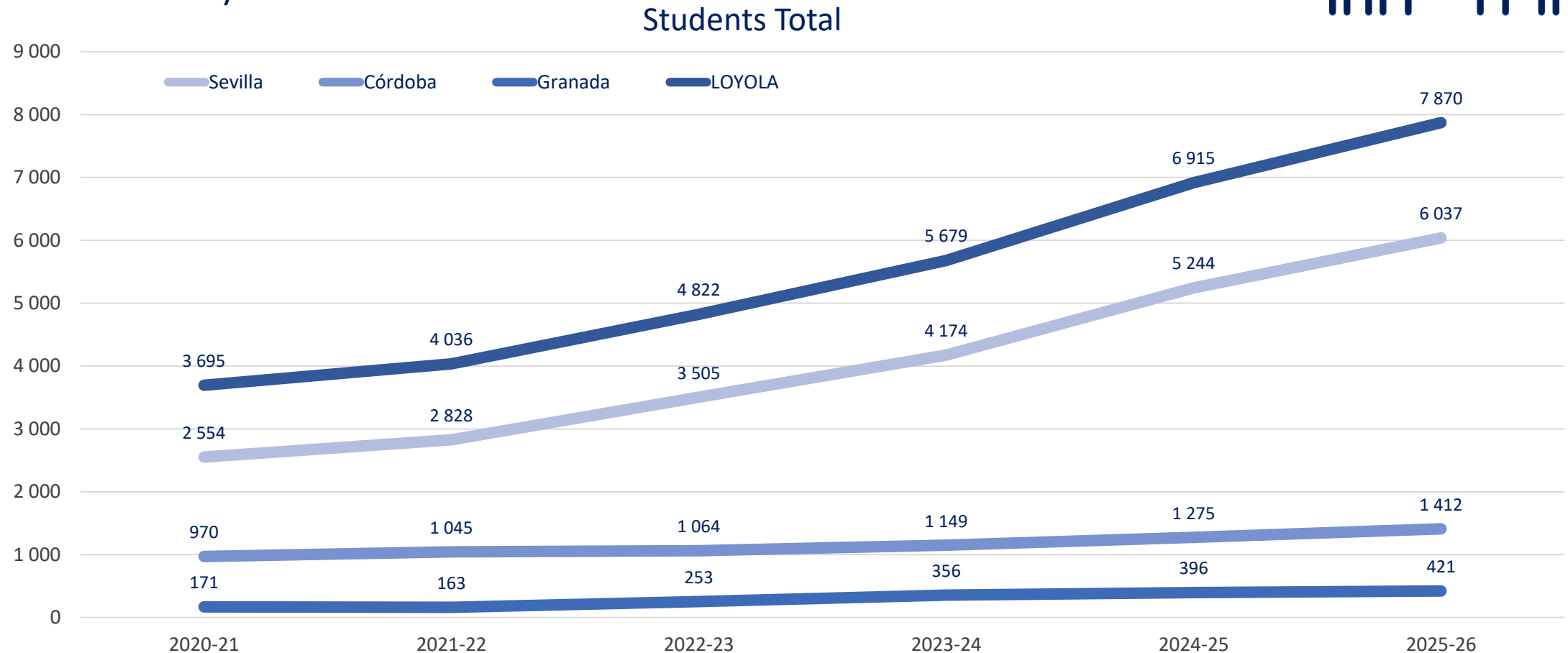
Over 32 new programs to start in the next 3 academic years

	PROGRAM	STARTING YEAR		
EDUCATION 	MUES + Diploma metodologías virtuales	22-23		
	Master Universitario en Psicopedagogía		23-24	
HEALTHCARE 	Master Universitario en Atención Temprana	22-23		
	Master Universitario en Geriátría y Gerontología		23-24	
	Master Universitario en Cuidados Paliativos		23-24	
	Master Universitario en Enfermedad Crónica Compleja y Pluripatología		23-24	
	Master Universitario en Bioética y Humanización de la Asistencia		23-24	
	Master Universitario en Enfermería Quirúrgica y Reanimación		23-24	
	Master en Intervención familiar (MIF)			24-25
	MIF + Diploma esp. Intervención Psicológica en Crisis, Emergencias y Catástrofes			24-25

Estimated growth per campus



In four academic years we will reach 70% of the current average size for a university...



... and we will have doubled the size of our university



Universidad
LOYOLA